

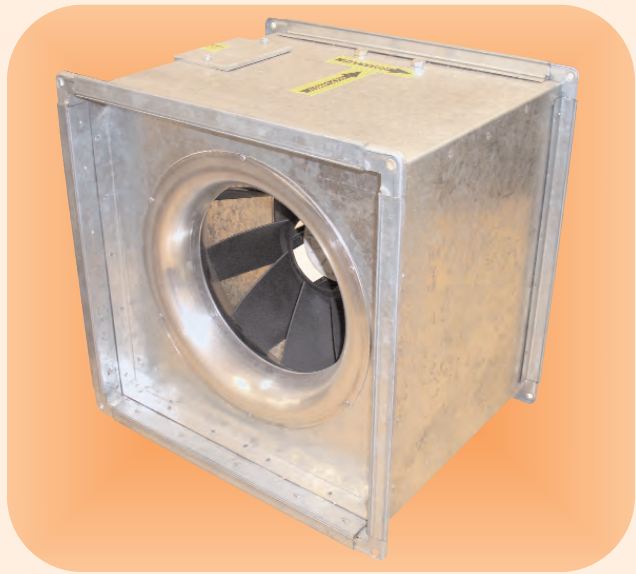
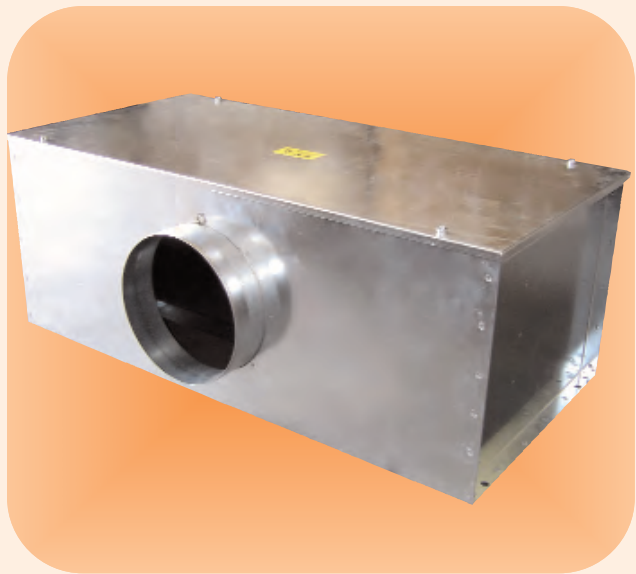
CABINET & TWIN FANS

FOR INDUSTRIAL / COMMERCIAL USE

- "ACFS" - Quiet Duct Centrifugal - Single Fan
- "DMTSQ" - Quiet Duct Centrifugal - Twin Fan
- "RMS" - Roof Centrifugal - Single Fan
- "RMTS" - Roof Centrifugal - Twin Fan
- "SMX" - In-Line Mixed Flow
- "PTE" & "RTE" - Belt Driven Twin



Uniclass L7534



"ACFS" - ACOUSTIC CABINET FANS - GENERAL

"ACFS" Range - Super-Silent Cabinet - Single Fan

- 7 models from 125 to 500mm
- Airflow from 392 to 3974 m³/hr (0.109 to 1.104 m³/sec)
- Galvanised steel cabinet with acoustic lining
- Acoustic lining 25mm thick, high density, non-toxic and Class "O" flame retardant
- Speed controllable
- Auto reset, thermal cut-out protection
- Integral mounting points for easy installation
- May be mounted vertically or horizontally (with access either on top or bottom - to be confirmed with order)
- Motor/impeller assembly mounted on removable plate for easy maintenance and cleaning
- Fans are pre-wired to a single external terminal box to ensure simple and quick installation
- Extremely low noise levels
- Max air temperature 40°C
- All fans single phase, 230v
- Twin fan version also available



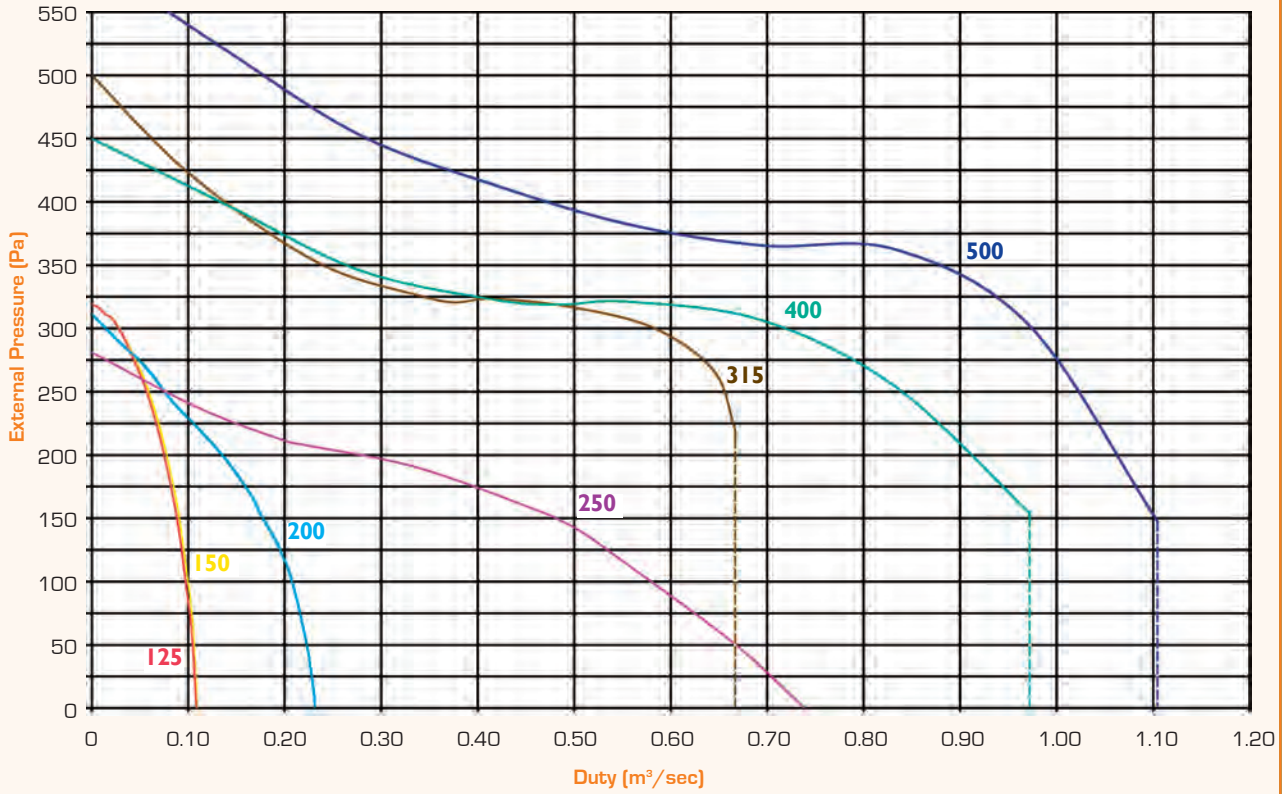
"ACFS" - ACOUSTIC CABINET FANS - TECHNICAL DATA

Model	Size		Power Kw	FLC amps	SC amps	Speed rpm	Speed Controller		Sound Level dBA at 3m	Sound Power Levels dB							
	ins	cm					Mid Octave Bands (Hz)										
							63	125		250	500	1000	2000	4000	8000		
ACFS125	5	12	0.135	0.63	1.6	2000	VC1	VC1AM	28	66	64	62	59	56	54	55	52
ACFS150	6	15	0.135	0.63	1.6	2000	VC1	VC1AM	28	66	64	62	59	56	54	55	52
ACFS200	8	20	0.19	0.85	2.2	1250	VC1	VC1AM	32	72	67	68	66	69	63	61	59
ACFS250	10	25	0.37	3.6	11.2	1450	VC4M	VC4AM	37	77	73	71	72	74	71	69	64
ACFS315	12	31	0.37	3.85	12	1400	VC4M	VC4AM	40	73	75	76	76	76	73	69	61
ACFS400	16	40	0.55	5.1	12.8	1400	VC7M	VC7AM	42	77	77	78	76	78	75	73	66
ACFS500	20	50	0.59	6.8	17.0	880	VC7M	VC7AM	42	77	77	78	76	78	75	73	66

"ACFS" - ACOUSTIC CABINET FANS - PERFORMANCE

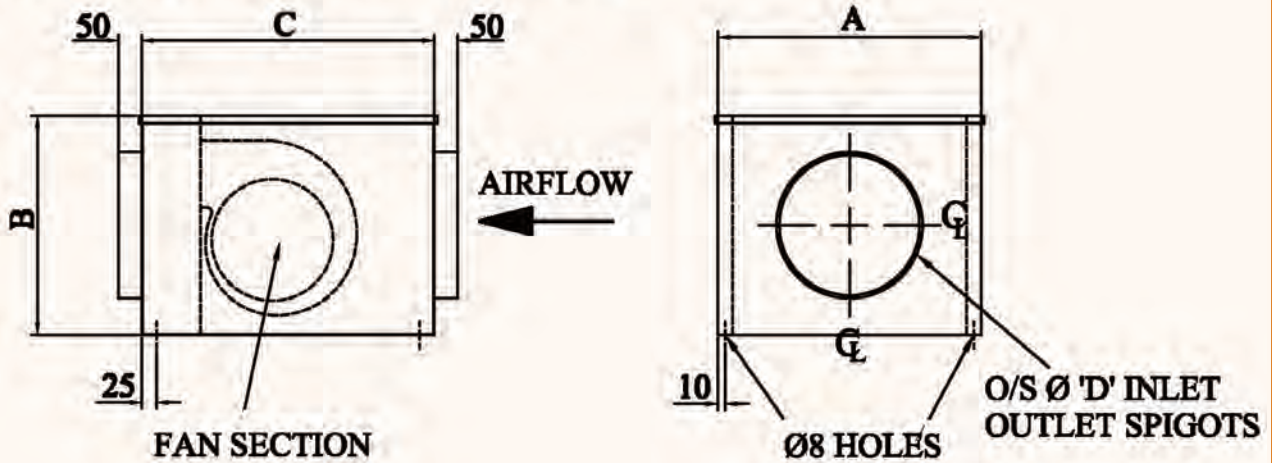
Model	Max m ³ /hr	Max m ³ /sec	m ³ /sec at Pa												
			0	25	50	75	100	150	200	250	300	350	400	450	500
ACFS125	392	0.109	0.109	0.107	0.106	0.103	0.100	0.090	0.077	0.059	0.028	-	-	-	-
<i>SFP</i>			<i>1.04</i>	<i>1.04</i>	<i>1.04</i>	<i>1.06</i>	<i>1.08</i>	<i>1.17</i>	<i>1.33</i>	<i>1.69</i>	<i>3.43</i>	-	-	-	-
ACFS150	389	0.108	0.108	0.106	0.104	0.101	0.097	0.088	0.075	0.057	0.028	-	-	-	-
<i>SFP</i>			<i>1.04</i>	<i>1.04</i>	<i>1.05</i>	<i>1.08</i>	<i>1.11</i>	<i>1.19</i>	<i>1.36</i>	<i>1.72</i>	<i>3.43</i>	-	-	-	-
ACFS200	832	0.231	0.231	0.228	0.222	0.215	0.207	0.177	0.135	0.075	0.015	-	-	-	-
<i>SFP</i>			<i>0.81</i>	<i>0.81</i>	<i>0.82</i>	<i>0.85</i>	<i>0.87</i>	<i>0.97</i>	<i>1.19</i>	<i>1.95</i>	<i>9.54</i>	-	-	-	-
ACFS250	2657	0.738	0.738	0.704	0.667	0.625	0.580	0.481	0.283	0.075	-	-	-	-	-
<i>SFP</i>			<i>1.33</i>	<i>1.37</i>	<i>1.41</i>	<i>1.46</i>	<i>1.51</i>	<i>1.70</i>	<i>2.56</i>	<i>7.50</i>	-	-	-	-	-
ACFS315	2398	0.666	-	-	-	-	-	-	-	0.655	0.583	0.241	0.138	0.061	-
<i>SFP</i>			-	-	-	-	-	-	-	<i>1.24</i>	<i>1.28</i>	<i>2.51</i>	<i>4.45</i>	<i>10.30</i>	-
ACFS400	3499	0.972	-	-	-	-	-	-	0.911	0.839	0.718	0.262	0.133	-	-
<i>SFP</i>			-	-	-	-	-	-	<i>1.23</i>	<i>1.18</i>	<i>1.22</i>	<i>2.60</i>	<i>4.90</i>	-	-
ACFS500	3974	1.104	-	-	-	-	-	1.102	1.062	1.023	0.974	0.879	0.472	0.285	0.178
<i>SFP</i>			-	-	-	-	-	<i>1.46</i>	<i>1.38</i>	<i>1.34</i>	<i>1.31</i>	<i>1.29</i>	<i>1.77</i>	<i>2.74</i>	<i>4.69</i>

“ACFS” - PERFORMANCE CURVES & DIMENSIONS



“ACFS” - ACOUSTIC CABINET FANS - DIMENSIONS (mm)

ACCESS VIA REMOVABLE TOP PANEL

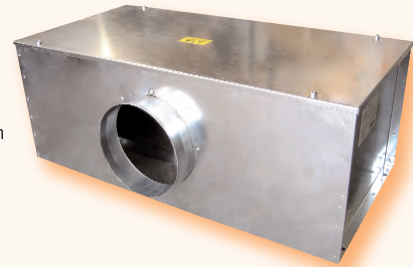


Model	A	B	C	D	Kg
ACFS125	375	240	400	125	13
ACFS150	375	240	400	150	13
ACFS200	475	310	425	200	15
ACFS250	575	440	500	250	31
ACFS315	575	500	550	315	40
ACFS400	625	500	550	400	41
ACFS500	750	545	600	500	51

“DMTSQ” - DUCT MOUNTED TWIN FAN - GENERAL

“DMTSQ” Range - Super-Silent Cabinet - Twin Fans

- 7 models from 125 to 500mm
- Airflow from 392 to 3974 m³/hr [0.109 to 1.104 m³/sec]
- Galvanised steel cabinet with acoustic lining
- Acoustic lining 25mm thick, high density, non-toxic and Class "O" flame retardant
- The motor/impeller assembly is mounted on a removable plate to facilitate easy maintenance and cleaning
- May be mounted in multiple orientations (confirm with sales at time of ordering)
- Fitted with back-draught shutters
- Fans are pre-wired to a single external terminal box to ensure simple and quick installation
- Auto reset, thermal cut-out protection
- Extremely low noise levels
- Max air temperature 40°C
- Auto changeover controllers with variable duty share available
- All fans single phase, 230v
- Single fan version available



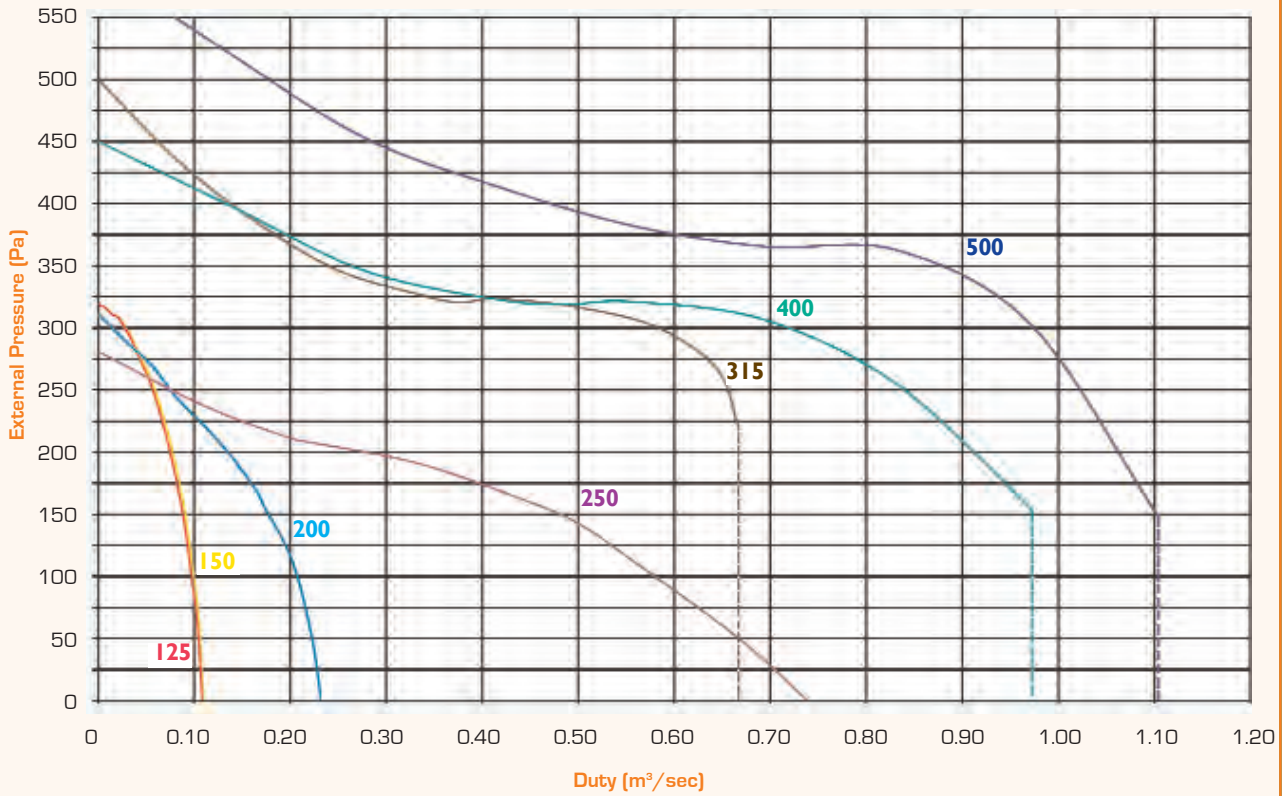
“DMTSQ” - DUCT MOUNTED TWIN FANS - TECHNICAL DATA

Model	Size		Power Kw	FLC amps	SC amps	Speed rpm	Auto Changeover Controller		Sound Level dB A at 3m	Sound Power Levels dB							
	ins	cm					Manual Duty Share	Auto Duty Share		Mid Octave Bands (Hz)							
										63	125	250	500	1000	2000	4000	8000
DMTSQ125	5	12	0.135	0.63	1.6	2000	VAC1E	VAC2E	28	66	64	62	59	56	54	55	52
DMTSQ150	6	15	0.135	0.63	1.6	2000	VAC1E	VAC2E	28	66	64	62	59	56	54	55	52
DMTSQ200	8	20	0.19	0.85	2.2	1250	VAC1E	VAC2E	32	72	67	68	66	69	63	61	59
DMTSQ250	10	25	0.37	3.6	11.2	1450	VAC1E	VAC2E	37	77	73	71	72	74	71	69	64
DMTSQ315	12	31	0.37	3.85	12.0	1400	VAC1E	VAC2E	40	73	75	76	76	76	73	69	61
DMTSQ400	16	40	0.55	5.1	12.8	1400	VAC1E	VAC2E	42	77	77	78	76	78	75	73	66
DMTSQ500	20	50	0.55	6.8	17	1055	VAC1E	VAC2E	42	72	77	78	76	78	75	73	66

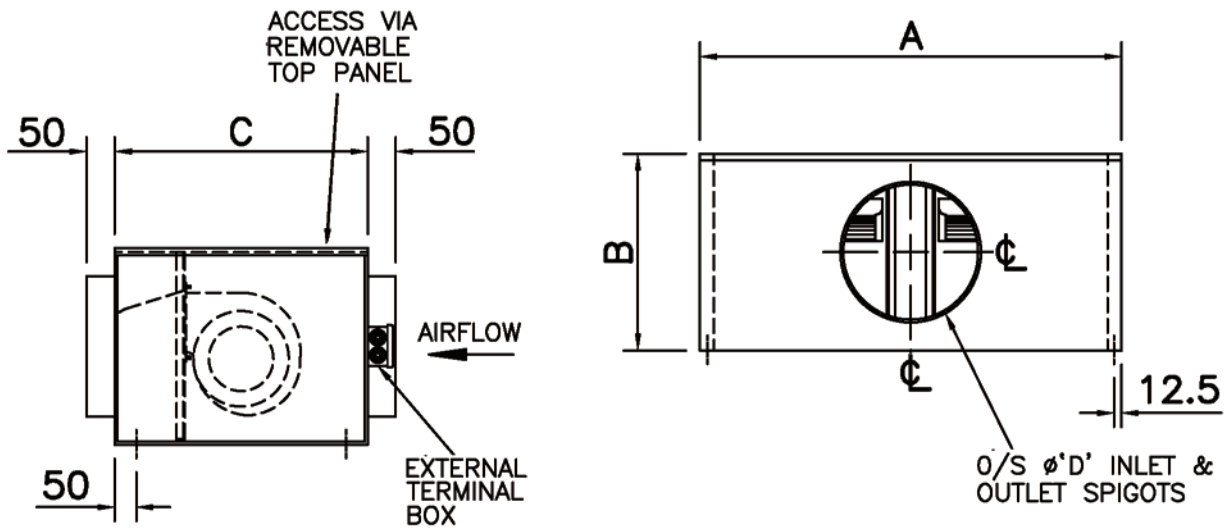
“DMTSQ” - DUCT MOUNTED TWIN FANS - PERFORMANCE

Model	Max m ³ /hr	Max m ³ /sec	m ³ /sec at Pa												
			0	25	50	75	100	150	200	250	300	350	400	450	500
DMTSQ125	392	0.109	0.109	0.107	0.106	0.103	0.100	0.090	0.077	0.059	0.028	-	-	-	-
SFP			1.04	1.04	1.04	1.06	1.08	1.17	1.33	1.69	3.50	-	-	-	-
DMTSQ150	389	0.108	0.108	0.106	0.104	0.101	0.097	0.088	0.075	0.057	0.028	-	-	-	-
SFP			1.04	1.04	1.05	1.08	1.11	1.19	1.36	1.72	3.50	-	-	-	-
DMTSQ200	832	0.231	0.231	0.228	0.222	0.215	0.207	0.177	0.135	0.075	0.015	-	-	-	-
SFP			0.81	0.81	0.82	0.85	0.87	0.97	1.19	1.95	9.54	-	-	-	-
DMTSQ250	2657	0.738	0.738	0.704	0.667	0.625	0.580	0.481	0.283	0.075	-	-	-	-	-
SFP			1.33	1.37	1.41	1.46	1.51	1.70	2.56	7.50	-	-	-	-	-
DMTSQ315	2398	0.666	-	-	-	-	-	-	-	0.655	0.583	0.241	0.138	0.061	-
SFP			-	-	-	-	-	-	-	1.24	1.28	2.51	4.45	10.30	-
DMTSQ400	3499	0.972	-	-	-	-	-	-	0.911	0.839	0.718	0.262	0.133	-	-
SFP			-	-	-	-	-	-	1.23	1.18	1.22	2.60	4.90	-	-
DMTSQ500	3974	1.104	-	-	-	-	-	1.102	1.062	1.023	0.974	0.879	0.472	0.285	0.178
SFP			-	-	-	-	-	1.46	1.38	1.34	1.31	1.29	1.77	2.74	4.69

“DMTSQ” - PERFORMANCE CURVES & DIMENSIONS



“DMTSQ”- DUCT MOUNTED TWIN FANS - DIMENSIONS (mm)



Model	A	B	C	D	Kg
DMTSQ125	550	310	400	125	20
DMTSQ150	550	310	400	150	20
DMTSQ200	800	310	400	200	22
DMTSQ250	1050	425	650	250	52
DMTSQ315	1050	475	650	315	70
DMTSQ400	1050	475	650	400	72
DMTSQ500	1250	525	750	500	85

"RMS" - ROOF MOUNTED SINGLE FAN - GENERAL

"RMS" Range

- 7 models from 125 to 500mm
- Airflow from 389 to 3974 m³/hr (0.108 to 1.104m³/sec)
- Single skinned plastisol coated steel cabinet
- Fully weatherproofed
- Birdmesh on cowl outlet
- Air inlet through rear or bottom panel (to be confirmed with order)
- Auto reset, thermal cut-out protection
- Max air temperature 40°C
- All fans single phase, 230v
- Twin fan version available



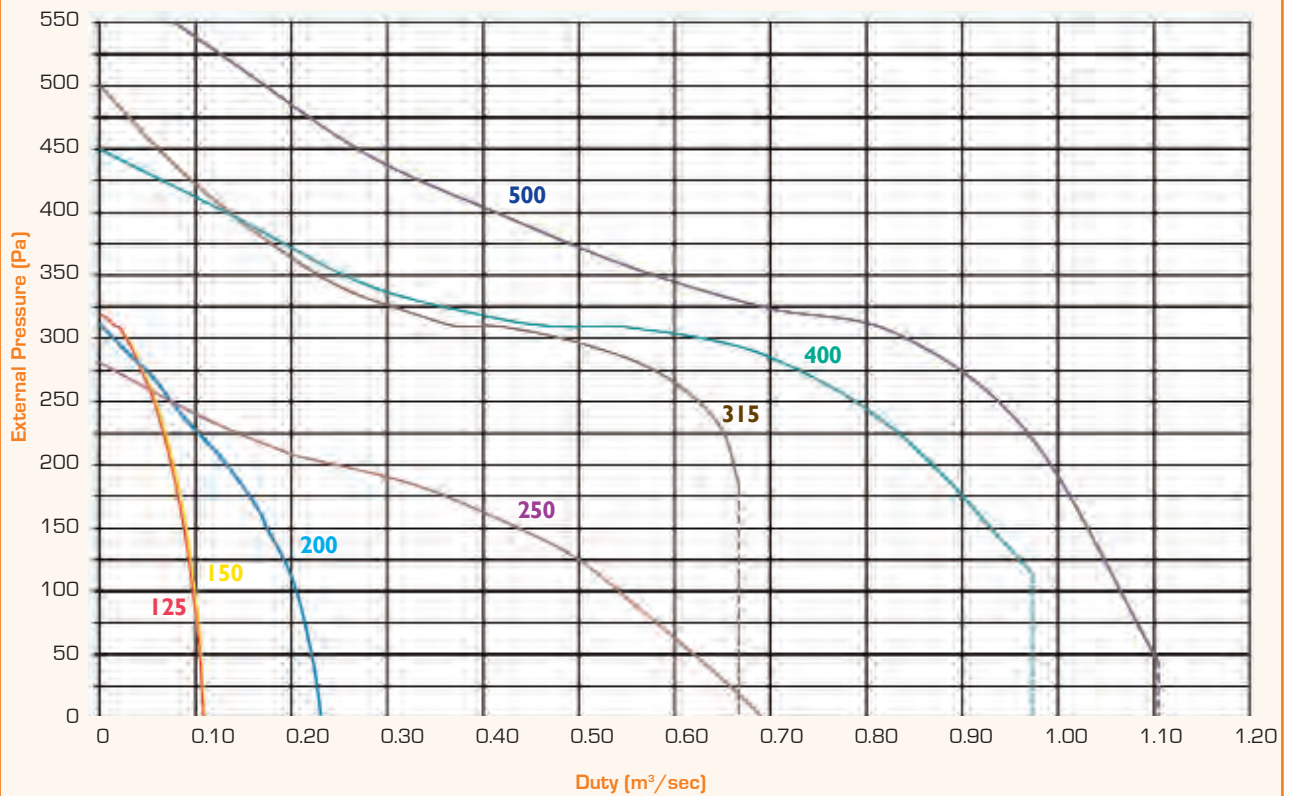
"RMS" ROOF MOUNTED SINGLE FAN - TECHNICAL DATA

Model	Size		Power Kw	Current amps	SC amps	Speed rpm	Speed Controller		Sound Power Levels dB							
	ins	cm					Electronic	Transformer	Mid Octave Bands (Hz)							
									63	125	250	500	1000	2000	4000	8000
RMS125	5	12	0.135	0.63	1.6	2000	VC1	VC1AM	66	69	62	59	56	54	55	52
RMS150	6	15	0.135	0.63	1.6	2000	VC1	VC1AM	66	69	62	59	56	54	55	52
RMS200	8	20	0.19	0.85	2.2	1250	VC1	VC1AM	72	67	68	66	69	63	61	59
RMS250	10	25	0.37	3.6	11.2	1450	VC4M	VC4AM	77	73	71	72	78	71	69	64
RMS315	12	31	0.37	3.85	12.0	1400	VC4M	VC4AM	73	75	76	76	76	73	69	61
RMS400	16	40	0.55	5.1	12.8	1400	VC7M	VC7AM	77	77	78	76	78	75	73	66
RMS500M	20	50	0.55	6.8	17	1055	VC7M	VC7AM	77	77	78	76	78	75	73	66

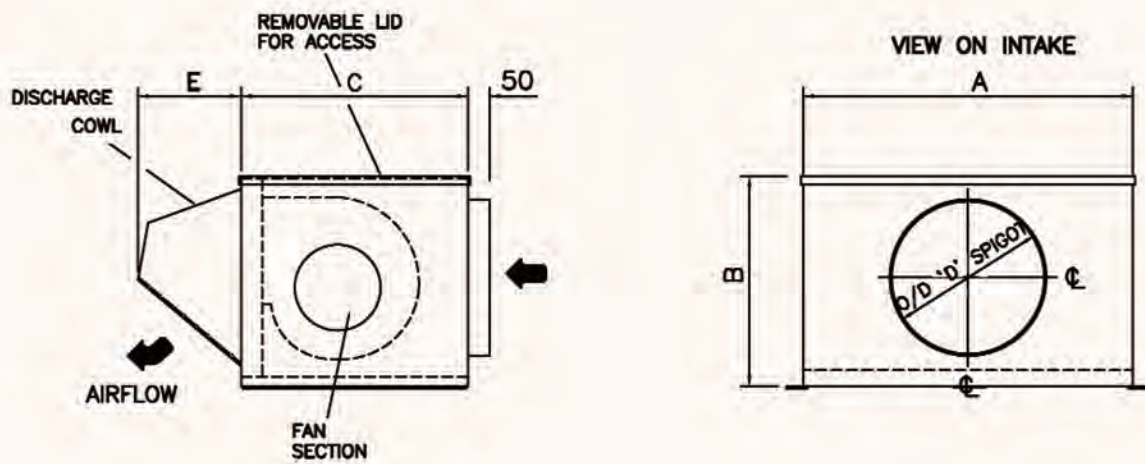
"RMS" - ROOF MOUNTED SINGLE FAN - PERFORMANCE

Model	Max m ³ /hr	Max m ³ /sec	m ³ /sec at Pa												
			0	25	50	75	100	150	200	250	300	350	400	450	500
RMS125	389	0.108	0.108	0.107	0.105	0.102	0.098	0.089	0.076	0.057	0.028	-	-	-	-
<i>SFP</i>			<i>1.04</i>	<i>1.04</i>	<i>1.04</i>	<i>1.07</i>	<i>1.10</i>	<i>1.19</i>	<i>1.35</i>	<i>1.74</i>	<i>3.45</i>	-	-	-	-
RMS150	385	0.107	0.107	0.105	0.103	0.099	0.095	0.086	0.073	0.055	0.022	-	-	-	-
<i>SFP</i>			<i>1.04</i>	<i>1.04</i>	<i>1.05</i>	<i>1.08</i>	<i>1.11</i>	<i>1.19</i>	<i>1.36</i>	<i>1.72</i>	<i>3.50</i>	-	-	-	-
RMS200	817	0.227	0.227	0.220	0.215	0.206	0.197	0.167	0.125	0.072	0.014	-	-	-	-
<i>SFP</i>			<i>0.81</i>	<i>0.82</i>	<i>0.85</i>	<i>0.87</i>	<i>0.90</i>	<i>1.02</i>	<i>1.27</i>	<i>1.98</i>	<i>9.55</i>	-	-	-	-
RMS250	2164	0.601	0.601	0.572	0.541	0.511	0.471	0.368	0.205	0.072	-	-	-	-	-
<i>SFP</i>			<i>1.49</i>	<i>1.53</i>	<i>1.58</i>	<i>1.63</i>	<i>1.72</i>	<i>2.02</i>	<i>3.33</i>	<i>7.50</i>	-	-	-	-	-
RMS315	2398	0.666	-	-	-	-	-	0.654	0.609	0.517	0.334	0.212	0.130	0.060	-
<i>SFP</i>			-	-	-	-	-	<i>1.24</i>	<i>1.26</i>	<i>1.37</i>	<i>1.90</i>	<i>2.91</i>	<i>4.69</i>	<i>10.37</i>	-
RMS400	3499	0.972	-	-	-	0.949	0.923	0.870	0.803	0.708	0.439	0.242	0.128	-	-
<i>SFP</i>			-	-	-	<i>1.27</i>	<i>1.24</i>	<i>1.19</i>	<i>1.18</i>	<i>1.23</i>	<i>1.64</i>	<i>2.89</i>	<i>5.05</i>	-	-
RMS500M	3974	1.104	-	-	1.100	1.082	1.065	1.030	0.992	0.938	0.842	0.579	0.412	0.269	0.173
<i>SFP</i>			-	-	<i>1.45</i>	<i>1.41</i>	<i>1.37</i>	<i>1.35</i>	<i>1.32</i>	<i>1.30</i>	<i>1.29</i>	<i>1.54</i>	<i>1.99</i>	<i>2.94</i>	<i>4.79</i>

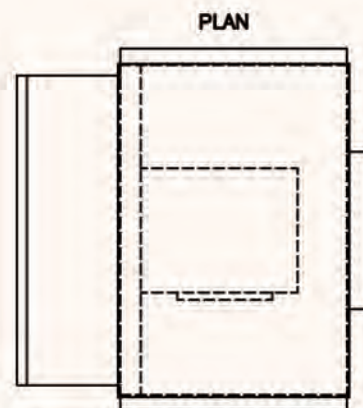
"RMS" - PERFORMANCE CURVES & DIMENSIONS



"RMS" - ACOUSTIC CABINET FANS - DIMENSIONS (mm)



Model	A	B	C	D	E	Kg
RMS125	325	275	300	125	150	20
RMS150	325	275	300	150	150	20
RMS200	425	375	425	200	150	28
RMS250	425	375	425	250	200	28
RMS315	575	450	500	315	250	35
RMS400	800	475	550	400	250	37
RMS500M	875	580	650	500	250	49



"RMTS" - ROOF MOUNTED TWIN FANS

"RMTS" Range

- 7 models from 125 to 500mm
- Airflow from 392 to 3974 m³/hr (0.109 to 1.104m³/sec)
- Single skinned plastisol coated steel cabinet
- Fully weatherproofed
- Birdmesh on cowl outlet
- Air inlet through rear or bottom panel (to be confirmed with order)
- Fitted back-draught shutters
- Auto reset, thermal cut-out protection
- Max air temperature 40°C
- Auto changeover controllers with variable duty share available
- All fans single phase, 230v
- Single fan version available



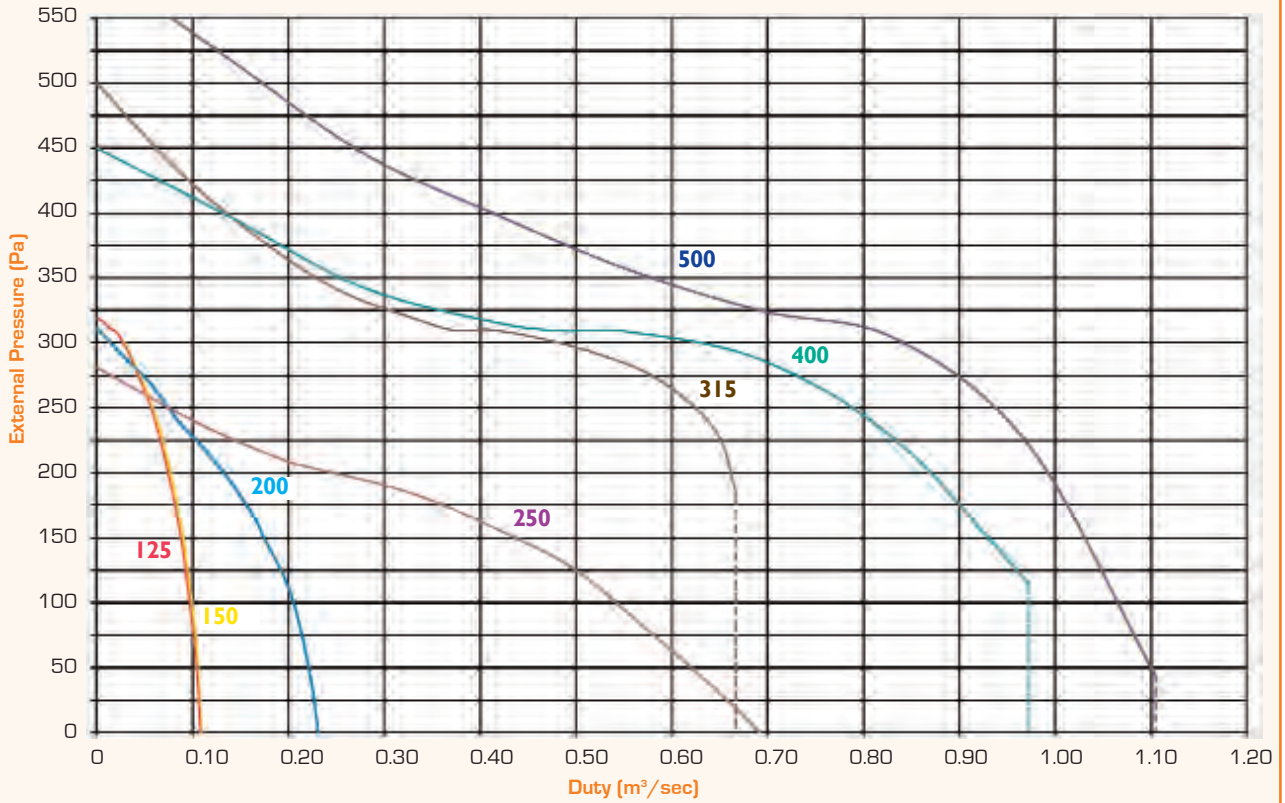
"RMTS" - ROOF MOUNTED TWIN FANS - TECHNICAL DATA

Model	Size		Power Kw	Current amps	SC amps	Speed rpm	Auto Changeover Controller		Speed Controller	Sound Power Levels dB							
	ins	cm					Manual Duty Share	Auto Duty Share		Mid Octave Bands (Hz)							
										63	125	250	500	1000	2000	4000	8000
RMTS125	5	12	0.135	0.63	1.6	2000	VAC1E	VAC2E	QE1.5	66	69	62	59	56	54	55	52
RMTS150	6	15	0.135	0.63	1.6	2000	VAC1E	VAC2E	QE1.5	66	69	62	59	56	54	55	52
RMTS200	8	20	0.19	0.85	2.2	1250	VAC1E	VAC2E	QE1.5	72	67	68	66	69	63	61	59
RMTS250	10	25	0.37	3.6	11.2	1450	VAC1E	VAC2E	QE6	77	73	71	72	78	71	69	64
RMTS315	12	31	0.37	3.85	12.0	1400	VAC1E	VAC2E	QE6	73	75	76	76	76	73	69	61
RMTS400	16	40	0.55	5.1	12.8	1400	VAC1E	VAC2E	QE6	77	77	78	76	78	75	73	66
RMTS500	20	50	0.55	6.6	17	1055	VAC1E	VAC2E	QE8	77	77	78	76	78	75	73	66

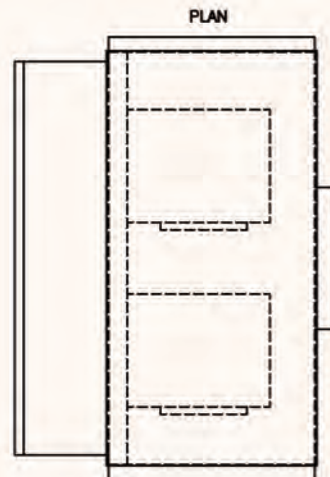
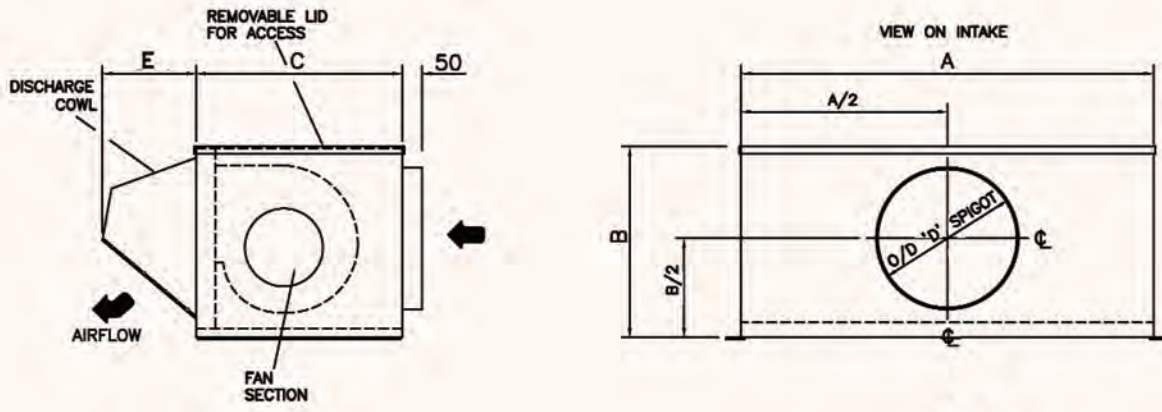
"RMTS" - ROOF MOUNTED TWIN FANS - PERFORMANCE

Model	Max m ³ /hr	Max m ³ /sec	m ³ /sec at Pa												
			0	25	50	75	100	150	200	250	300	350	400	450	500
RMTS125	392	0.109	0.109	0.107	0.106	0.103	0.099	0.090	0.077	0.059	0.029	-	-	-	-
<i>SFP</i>			<i>1.04</i>	<i>1.04</i>	<i>1.04</i>	<i>1.06</i>	<i>1.10</i>	<i>1.18</i>	<i>1.33</i>	<i>1.68</i>	<i>3.29</i>	-	-	-	-
RMTS150	389	0.108	0.108	0.106	0.104	0.101	0.096	0.087	0.074	0.057	0.028	-	-	-	-
<i>SFP</i>			<i>1.04</i>	<i>1.04</i>	<i>1.05</i>	<i>1.08</i>	<i>1.12</i>	<i>1.21</i>	<i>1.38</i>	<i>1.74</i>	<i>3.43</i>	-	-	-	-
RMTS200	828	0.230	0.230	0.226	0.221	0.214	0.205	0.174	0.132	0.074	0.014	-	-	-	-
<i>SFP</i>			<i>0.81</i>	<i>0.81</i>	<i>0.82</i>	<i>0.85</i>	<i>0.88</i>	<i>0.99</i>	<i>1.21</i>	<i>1.97</i>	<i>9.89</i>	-	-	-	-
RMTS250	2272	0.631	0.631	0.657	0.620	0.581	0.542	0.436	0.245	0.075	-	-	-	-	-
<i>SFP</i>			<i>1.38</i>	<i>1.42</i>	<i>1.46</i>	<i>1.51</i>	<i>1.57</i>	<i>1.81</i>	<i>2.89</i>	<i>7.50</i>	-	-	-	-	-
RMTS310	2380	0.661	-	-	-	-	-	-	0.661	0.624	0.483	0.228	0.135	0.061	-
<i>SFP</i>			-	-	-	-	-	-	<i>1.23</i>	<i>1.25</i>	<i>1.43</i>	<i>2.66</i>	<i>4.53</i>	<i>10.28</i>	-
RMTS400	3348	0.930	-	-	-	-	-	0.930	0.869	0.788	0.630	0.255	0.131	-	-
<i>SFP</i>			-	-	-	-	-	<i>1.25</i>	<i>1.19</i>	<i>1.18</i>	<i>1.28</i>	<i>2.70</i>	<i>4.93</i>	-	-
RMTS500	3974	1.104	-	-	1.100	1.082	1.065	1.030	0.992	0.938	0.842	0.579	0.412	0.269	0.173
<i>SFP</i>			-	-	<i>1.45</i>	<i>1.41</i>	<i>1.37</i>	<i>1.35</i>	<i>1.32</i>	<i>1.30</i>	<i>1.29</i>	<i>1.54</i>	<i>1.99</i>	<i>2.94</i>	<i>4.79</i>

“RMTS” - PERFORMANCE CURVES & DIMENSIONS



“RMTS” - ACOUSTIC CABINET FANS - DIMENSIONS (mm)

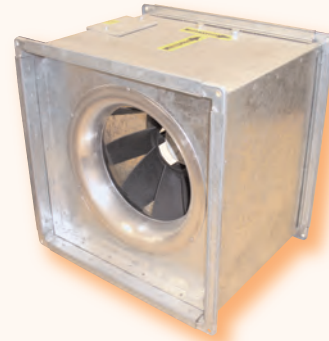


Model	A	B	C	D	E	Kg
RMTS125	650	375	400	125	150	19
RMTS150	650	375	400	150	150	19
RMTS200	800	375	500	200	175	21
RMTS250	950	450	500	250	200	45
RMTS315	1000	580	650	315	200	51
RMTS400	1150	580	650	400	250	56
RMTS500	1250	580	700	500	300	84

“SMX” - SQUARE CASED MIXED FLOW FANS

“SMX” Range

- 5 sizes - casings from 450 to 700 mm square
- Airflow to 4.17m³/sec - pressure to 600 Pa
- Robust construction with casing in 1mm thick galvanised sheet steel
- Motor is external rotor type, 4 pole, single or three phase (other options available)
- Connections for thermal cut-out protection
- Integral motor/impeller assembly with impeller in polyamide for sizes 350-450 or aluminium for sizes 500 and 560
- Flanged connection for quick and simple installation
- Unique, integral terminal box allows for electrical connections on two sides of casing to ensure flexibility during installation
- Suitable for operation in air temperatures between -10°C and +60°C (Models SMX350/4/1, SMX400/4/1 and SMX450/4/1). Models SMX500/4/1 and SMX560/4/3 suitable for between -10°C and +40°C
- Motor fan assembly IP54 rated
- External models available to order



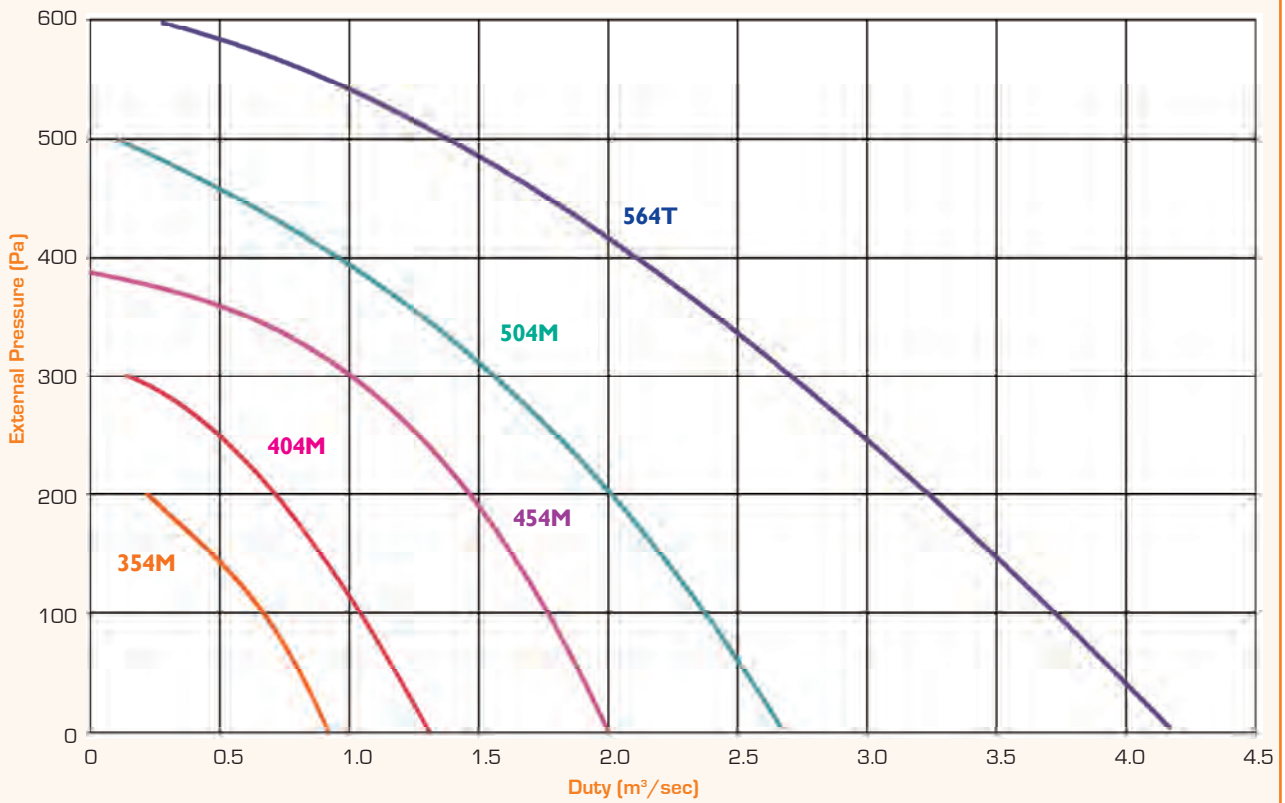
“SMX” - SQUARE CASED MIXED FLOW FANS - TECHNICAL DATA

Model	Size		Power Kw	Current amps	SC amps	Speed rpm	Transformer	Sound Level dBA at 3m	Sound Power Levels dB							
	Mid Octave Bands (Hz)															
	63	125							250	500	1000	2000	4000	8000		
SMX354M	14	35	.310	1.35	3.7	1390	VC1AM	53	77	76	74	68	64	62	56	50
SMX400M	16	40	.460	2.0	5.0	1280	VC4AM	59	83	82	80	74	70	68	62	56
SMX454M	18	45	.910	4.4	9.2	1260	VC7AM	61	85	84	82	76	72	70	64	58
SMX504M	20	50	1.45	6.1	15.0	1310	VC7AM	62	86	85	83	77	73	71	65	59
SMX564T	22	56	2.40	4.3	20.0	1350	VC7AT	69	93	92	90	84	80	78	72	66

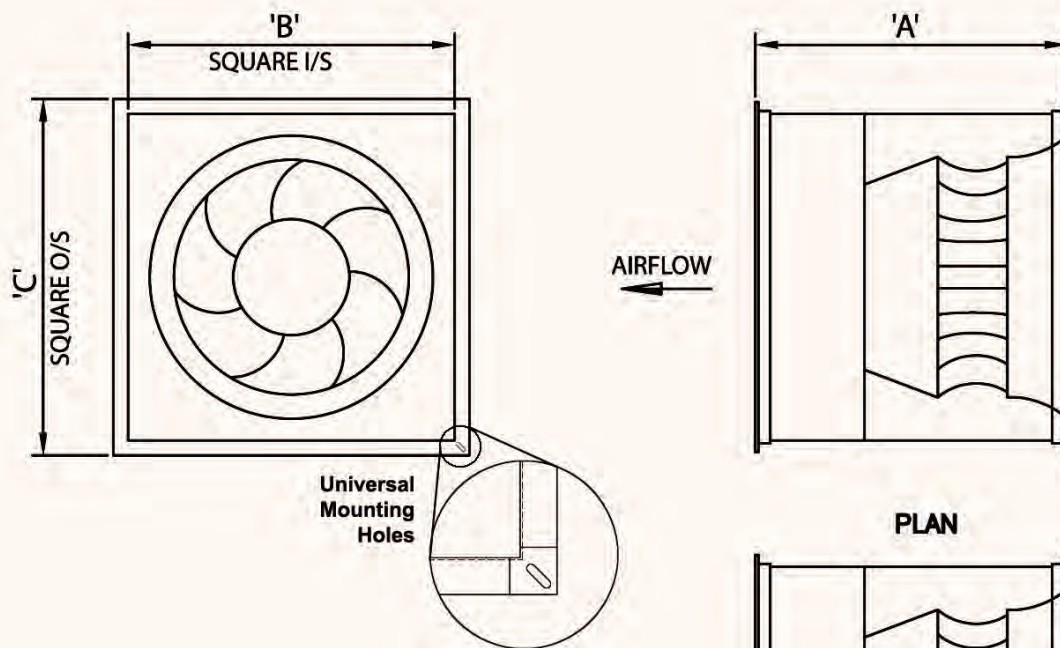
“SMX” - SQUARE CASED MIXED FLOW FANS - PERFORMANCE

Model	Max m ³ /hr	Max cfm	m ³ /sec at Pa													
			0	50	100	150	200	250	300	350	400	450	500	550	600	
SMX354M	3312	1954	0.92	0.81	0.67	0.47	0.22	-	-	-	-	-	-	-	-	-
SMX400M	4716	2782	1.31	1.17	1.06	0.89	0.69	0.52	0.14	-	-	-	-	-	-	-
SMX454M	7200	4248	2.00	1.88	1.79	1.61	1.48	1.25	1.02	0.61	-	-	-	-	-	-
SMX504M	9612	5671	2.67	2.56	2.35	2.20	2.00	1.81	1.59	1.28	0.94	0.56	0.11	-	-	-
SMX564T	15012	8857	4.17	3.96	3.75	3.51	3.23	2.95	2.67	2.43	2.12	1.80	1.41	0.83	0.28	-

"SMX" - PERFORMANCE CURVES & DIMENSIONS



"SMX" - MIXED FLOW FANS - DIMENSIONS (mm)

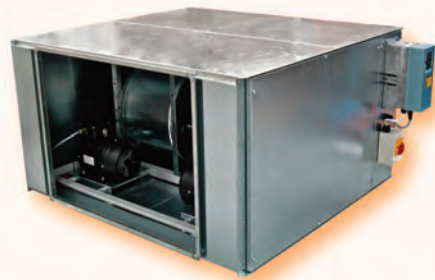


Model	A	B	C	Kg
SMX354M	400	450	500	18
SMX400M	435	500	550	26
SMX454M	505	550	620	35
SMX504M	535	661	731	45
SMX564T	570	700	770	54

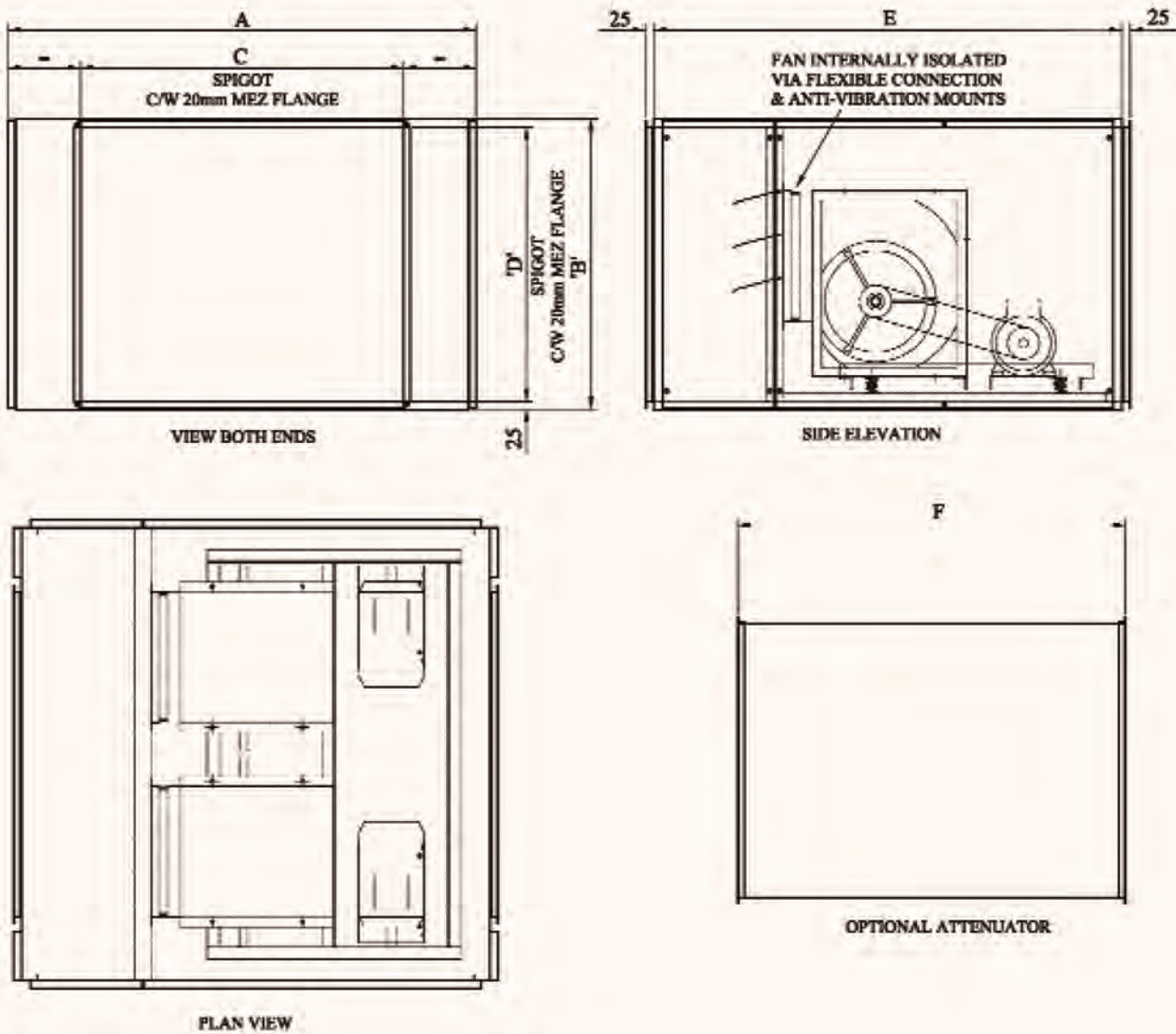
“PTE”- INTERNAL BELT DRIVEN TWIN FANS

“PTE” Range

- 17 models
- Airflow to 2.0m³/sec
- 25mm double skinned galvanised steel case
- Max air temperature 40°C
- Auto changeover controllers with variable duty share available
- For horizontal mounting only (contact AVT for information re vertical mounting)
- External models available

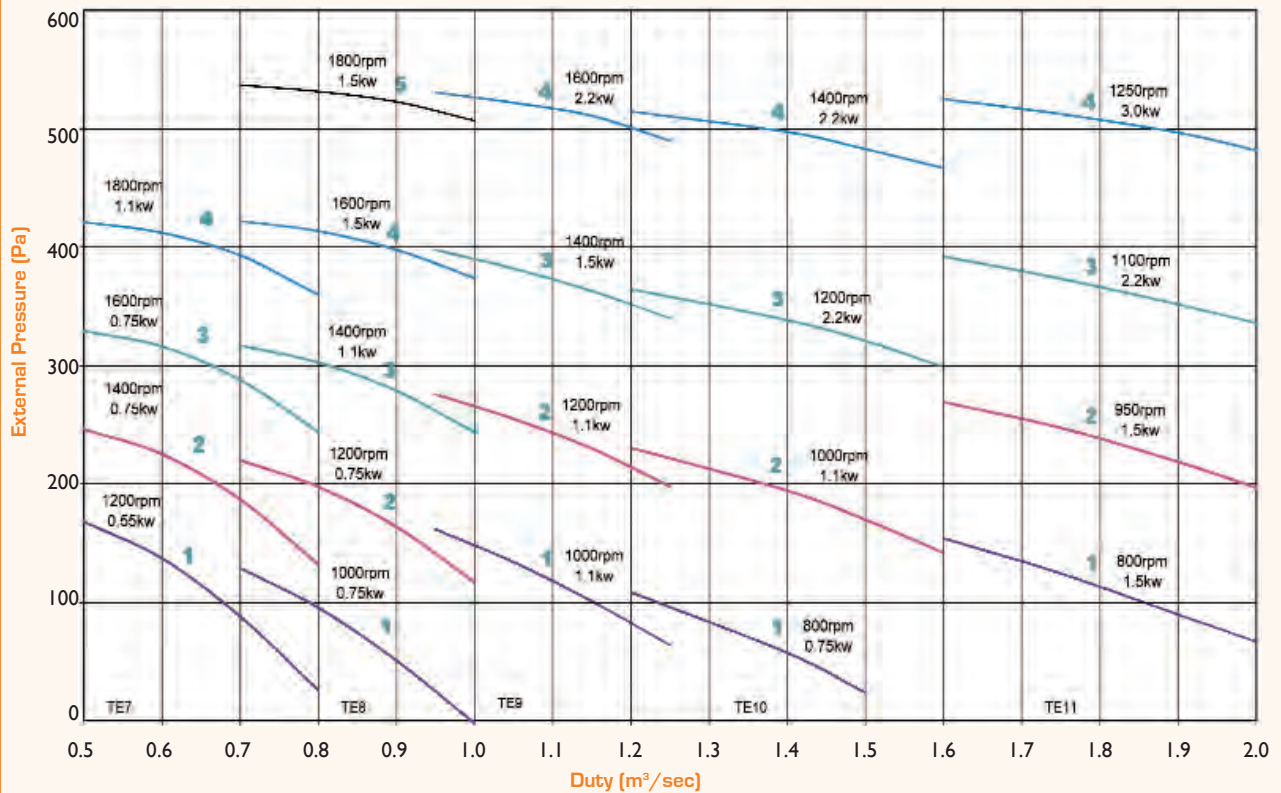


“PTE” - BELT DRIVEN TWIN FANS - DIMENSIONS (mm)

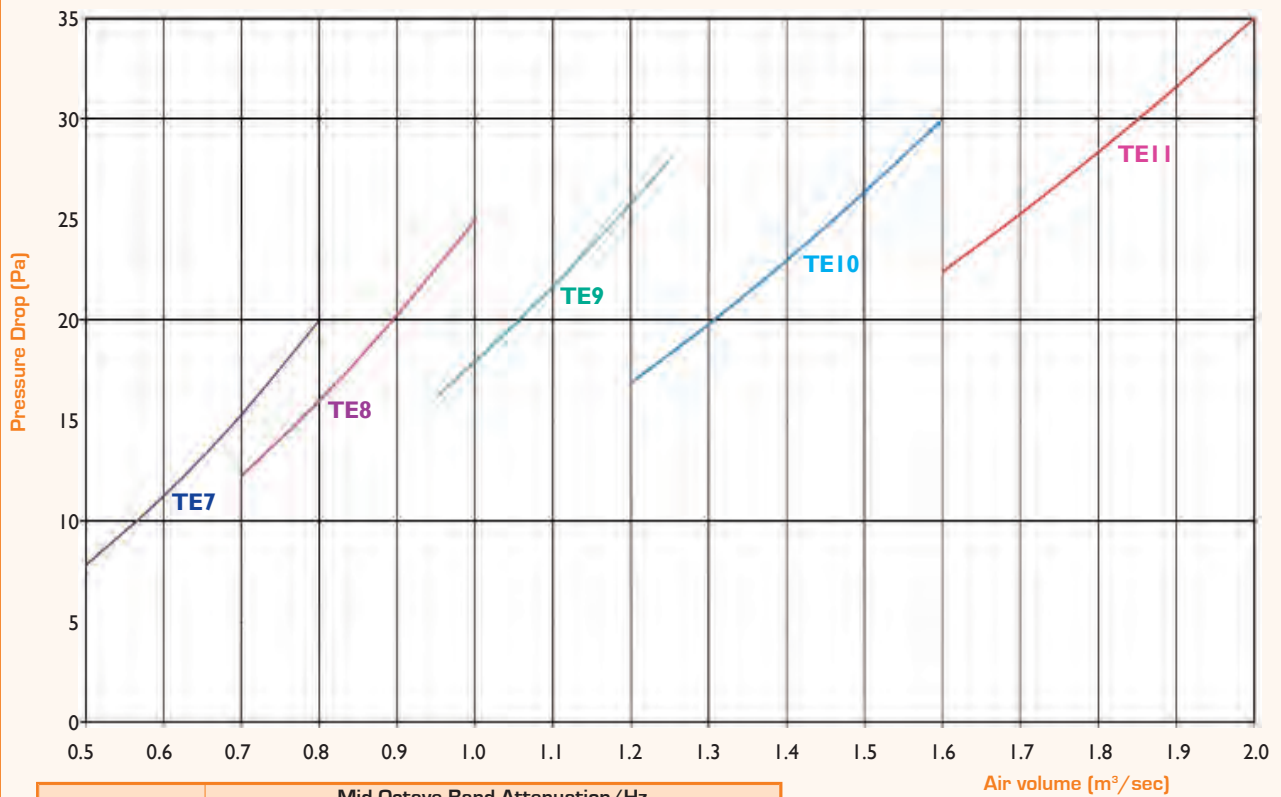


Model	A	B	C	D	E	F	Kg
PTE7	1000	500	900	450	950	1200	135
PTE8	1150	550	900	500	1000	1200	160
PTE9	1200	650	900	600	1125	1200	196
PTE10	1350	750	900	700	1250	1200	230
PTE11	1450	900	1000	850	1450	1200	275

"PTE" and "RTE"- PERFORMANCE CURVES



"PTE" - ATTENUATOR PRESSURE DROPS



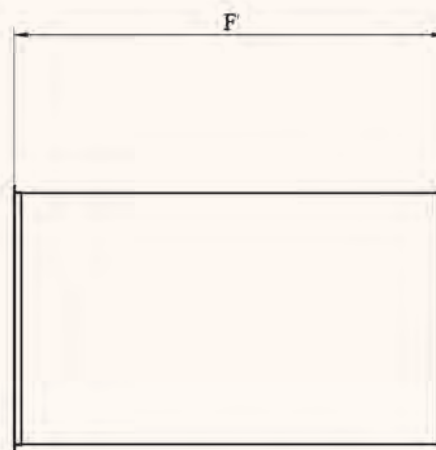
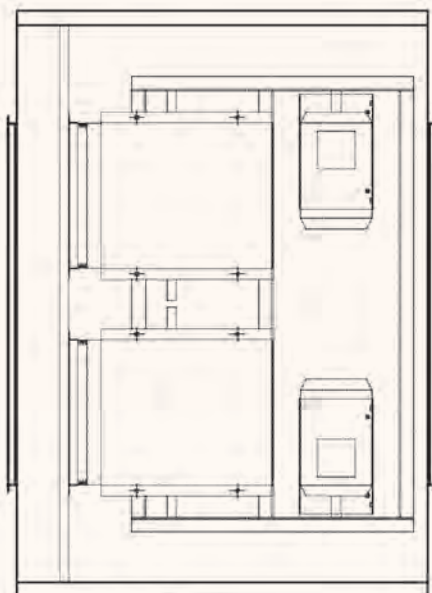
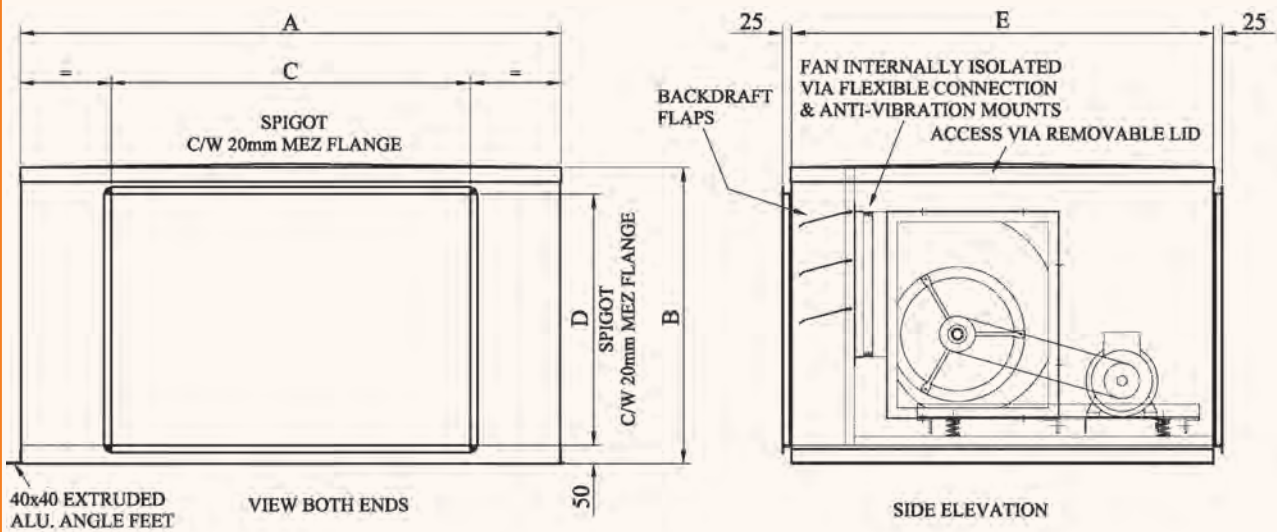
Length	Mid Octave Band Attenuation/Hz							
	63	125	250	500	1000	2000	4000	8000
900mm	5	9	16	30	39	39	31	26
1200mm	6	12	23	40	51	51	41	29
1500mm	8	15	26	43	53	53	45	32
1800mm	9	17	30	47	55	55	49	36
2100mm	11	20	35	55	55	55	55	43
2400mm	12	23	40	55	55	55	55	47

“RTE” - ROOF MOUNTED BELT DRIVEN TWIN FANS

“RTE” Range

- 17 models
- Airflow to 2.0m³/sec
- Single skinned galvanised steel case with plastisol finish (double skinned option)
- Fully weatherproofed
- Max air temperature 40°C
- Auto changeover controllers with variable duty share available
- Internal models available

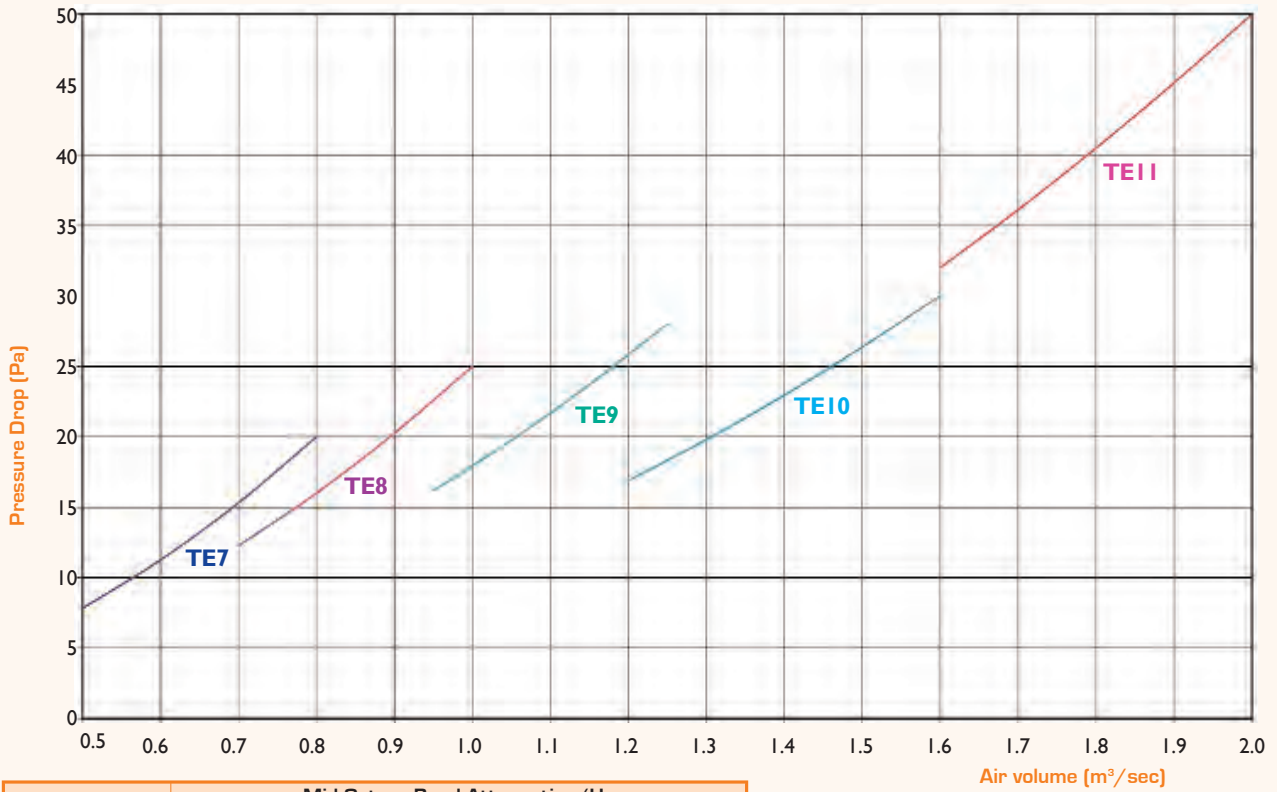
“RTE” - BELT DRIVEN TWIN FANS - DIMENSIONS (mm)S



Model	A	B	C	D	E	F	Kg
RTE7	1100	550	900	450	900	1200	230
RTE8	1250	600	900	500	1000	1200	275
RTE9	1300	700	900	600	1050	1200	335
RTE10	1450	800	900	700	1125	1200	380
RTE11	1550	800	1000	700	1175	1200	425

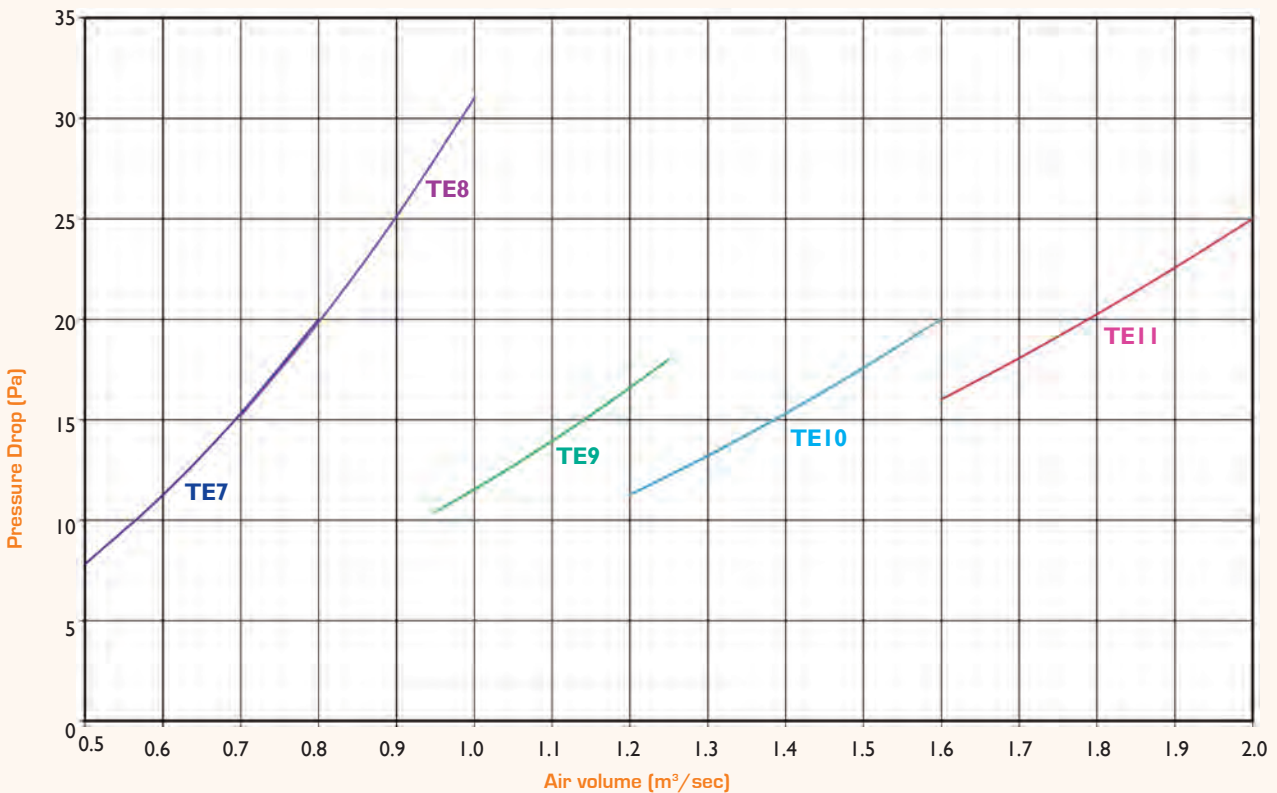


"RTE"- ATTENUATOR PRESSURE DROPS



Length	Mid Octave Band Attenuation/Hz							
	63	125	250	500	1000	2000	4000	8000
900mm	5	9	16	30	39	39	31	26
1200mm	6	12	23	40	51	51	41	29
1500mm	8	15	26	43	53	53	45	32
1800mm	9	17	30	47	55	55	49	36
2100mm	11	20	35	55	55	55	55	43
2400mm	12	23	40	55	55	55	55	47

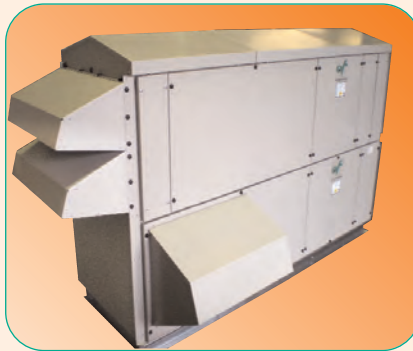
"RTE" - COWL PRESSURE DROPS



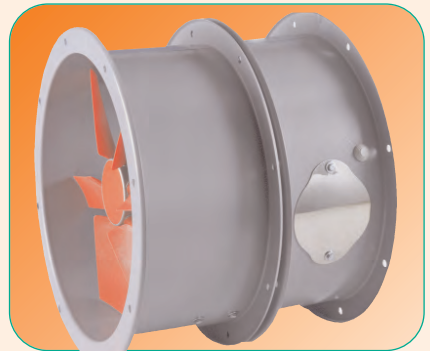
Other ventilation products



Commercial/Industrial Air Handling



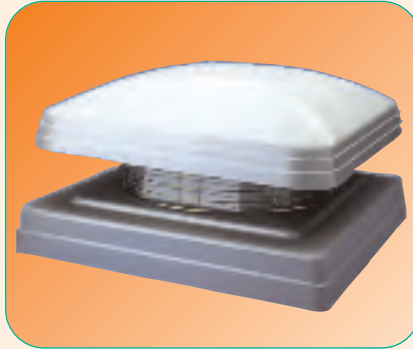
Commercial/Industrial Heat Recovery



Long Cased Axial Fans



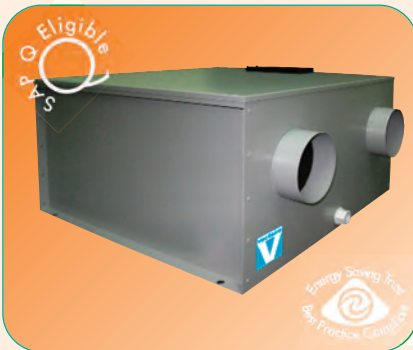
Plate Axial Fans



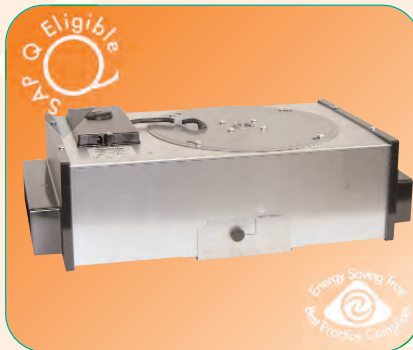
Roof Mounted Axial Fans



Centrifugal Roof Fans



Residential Heat Recovery - DC Motors



Microbox Slimline Fans - DC Motor Option



In-Line Fans



Residential Heat Recovery - DC Motors



Built-in Wall Fans



Window Wall Fans

Vectaire Ltd
 Lincoln Road
 Cressex Business Park
 High Wycombe
 Buckinghamshire
 HP12 3RH
 Tel: +44(0)1494 522333
 Fax: +44(0)1494 522337
 Email: sales@vectaire.co.uk
 Web: www.vectaire.co.uk

